

Florida's Refugee Population Statistical Report

October 1st, 2006 – September 30th, 2007

Federal Fiscal Year 2007



Courtesy of the US Coast Guard

Prepared By:

Florida Department of Children & Families
Refugee Services

**State of Florida Arrivals and Clients Receiving Services
Federal Fiscal Year 2007**

Immigration Status

Status	Clients Served *	Percent
Asylee	1,859	11.67%
Entrant	2,263	14.21%
Parolee	11,237	70.55%
Refugee	568	3.57%
Total	15,927	100.00%

Status	Arrivals	Percent
Entrant	4,082	31.52%
Parolee	6,193	47.82%
Refugee	2,675	20.66%
Total	12,950	100.00%

Status	Clients Served and Arrivals	Percent
Asylee	1,859	6.44%
Entrant	6,345	21.97%
Parolee	17,430	60.36%
Refugee	3,243	11.23%
Total	28,877	100.00%

Note: Provider Services based on date of entry in FFY 2007.

* Excludes clients in FFY 2007 arrivals.

**State of Florida Arrivals and Clients Receiving Services
Federal Fiscal Year 2007
County by Origin and Status**

COUNTY	Refugees			Entrant		Parolees		Asylees			Total
	Cubans	Haitians	Others	Cubans	Haitians	Cubans	Haitians	Cubans	Haitians	Others	
ALACHUA	2	0	0	1	0	1	0	0	0	0	4
BREVARD	11	0	14	5	0	14	0	0	0	0	44
BROWARD	92	11	45	138	56	376	14	14	175	205	1,126
CHARLOTTE	8	0	1	5	0	3	0	0	0	0	17
CLAY	0	0	0	0	0	2	1	0	0	1	4
COLLIER	54	7	2	238	13	389	21	3	42	8	777
COLUMBIA	0	0	0	0	0	0	0	0	0	3	3
DESOTO	0	0	0	6	0	1	0	0	0	0	7
DUVAL	61	6	497	6	5	92	3	1	18	13	702
ESCAMBIA	0	0	1	0	0	0	0	0	0	0	1
FLAGLER	0	0	0	0	0	1	0	0	1	0	2
HAMILTON	0	0	0	3	0	1	0	0	0	0	4
HENDRY	13	0	0	3	0	4	0	0	0	0	20
HERNANDO	0	0	0	8	0	9	0	0	0	1	18
HIGHLANDS	0	0	1	1	0	8	0	0	0	0	10
HILLSBOROUGH	219	7	128	191	5	921	3	8	28	72	1,582
INDIAN RIVER	0	0	0	2	4	10	0	0	0	0	16
LAKE	9	0	1	31	1	86	0	0	1	6	135
LEE	19	0	15	67	5	281	3	3	0	1	394
LEON	0	0	5	0	0	0	0	0	0	0	5
LEVY	0	0	0	1	0	0	0	0	0	0	1
MADISON	0	0	0	0	0	1	0	0	0	0	1

**State of Florida Arrivals and Clients Receiving Services
Federal Fiscal Year 2007
County by Origin and Status**

COUNTY	Refugees			Entrant		Parolees		Asylees			Total
	Cubans	Haitians	Others	Cubans	Haitians	Cubans	Haitians	Cubans	Haitians	Others	
MANATEE	0	0	0	2	0	12	0	0	1	0	15
MARION	3	0	0	7	0	7	0	0	0	0	17
MARTIN	0	0	0	1	0	5	0	0	0	0	6
MIAMI-DADE	1,527	22	57	4,828	180	13,678	102	67	275	287	21,023
MONROE	10	0	0	65	1	65	0	1	17	2	161
OKALOOSA	0	0	5	0	0	0	0	0	0	0	5
OKEECHOBEE	0	0	0	0	0	1	0	0	0	0	1
ORANGE	39	1	61	71	12	225	30	6	115	124	684
OSCEOLA	3	0	0	18	0	87	0	0	7	22	137
PALM BEACH	58	10	30	234	22	570	19	8	134	29	1,114
PASCO	29	0	3	13	1	46	0	0	1	9	102
PINELLAS	56	2	29	10	1	70	0	1	1	23	193
POLK	3	0	0	33	0	80	0	0	25	3	144
PUTNAM	0	0	0	0	0	2	0	0	0	0	2
SARASOTA	10	0	35	23	1	81	0	0	2	2	154
SEMINOLE	14	0	0	6	0	64	0	1	0	68	153
ST JOHNS	0	0	0	0	1	0	0	0	0	0	1
ST LUCIE	0	0	0	10	0	32	1	1	11	1	56
SUWANNEE	0	0	0	4	0	1	0	0	0	0	5
VOLUSIA	7	0	0	6	0	7	0	0	0	11	31
TOTAL	2,247	66	930	6,037	308	17,233	197	114	854	891	28,877

**State of Florida Arrivals and Clients Receiving Services
Federal Fiscal Year 2007
Origin by County**

COUNTY	CUBA	HAITI	OTHER	TOTAL
ALACHUA	4	0	0	4
BREVARD	30	0	14	44
BROWARD	620	256	250	1,126
CHARLOTTE	16	0	1	17
CLAY	2	1	1	4
COLLIER	684	83	10	777
COLUMBIA	0	0	3	3
DESOTO	7	0	0	7
DUVAL	160	32	510	702
ESCAMBIA	0	0	1	1
FLAGLER	1	1	0	2
HAMILTON	4	0	0	4
HENDRY	20	0	0	20
HERNANDO	17	0	1	18
HIGHLANDS	9	0	1	10
HILLSBOROUGH	1,339	43	200	1,582
INDIAN RIVER	12	4	0	16
LAKE	126	2	7	135
LEE	370	8	16	394
LEON	0	0	5	5
LEVY	1	0	0	1
MADISON	1	0	0	1
MANATEE	14	1	0	15
MARION	17	0	0	17
MARTIN	6	0	0	6
MIAMI-DADE	20,100	579	344	21,023
MONROE	141	18	2	161
OKALOOSA	0	0	5	5
OKEECHOBEE	1	0	0	1
ORANGE	341	158	185	684
OSCEOLA	108	7	22	137
PALM BEACH	870	185	59	1,114
PASCO	88	2	12	102
PINELLAS	137	4	52	193
POLK	116	25	3	144
PUTNAM	2	0	0	2
SARASOTA	114	3	37	154
SEMINOLE	85	0	68	153
ST JOHNS	0	1	0	1
ST LUCIE	43	12	1	56
SUWANNEE	5	0	0	5
VOLUSIA	20	0	11	31
TOTAL	25,631	1,425	1,821	28,877

**State of Florida Arrivals and Clients Receiving Services
Federal Fiscal Year 2007
Origin by Age**

ORIGIN	0-5	>5-18	>19-60	>60	TOTAL
AFGHANISTAN	0	2	7	0	9
ALBANIA	0	0	2	0	2
ARGENTINA	0	0	2	0	2
BELARUS	0	4	11	0	15
BOLIVIA	0	2	0	0	2
BOSNIA	0	0	2	0	2
BRAZIL	0	0	1	0	1
BURMA	51	110	351	7	519
BURUNDI	11	37	32	4	84
CENTRAL AFRICAN REPUBLIC	0	2	0	0	2
CAMBODIA	0	0	2	1	3
CHINA	0	3	18	0	21
COLOMBIA	13	114	427	7	561
CONGO	2	0	2	1	5
CUBA	522	3,506	20,721	704	25,453
DOMINICAN REPUBLIC	1	0	2	0	3
ECUADOR	0	0	5	0	5
EGYPT	0	0	3	1	4
EL SALVADOR	0	0	4	0	4
ERITREA	1	7	9	0	17
ESTONIA	0	0	1	0	1
ETHIOPIA	1	7	23	1	32
FINLAND	0	0	2	0	2
FRANCE	1	0	0	0	1
GUATEMALA	4	5	5	0	14
HAITI	14	496	906	12	1,428
HONDURAS	0	2	7	0	9
IRAN	1	3	34	0	38
IRAQ	0	0	9	0	9
IVORY COAST	0	0	1	0	1
JAMAICA	0	0	2	0	2
LIBERIA	1	7	7	0	15
LITHUANIA	1	0	0	0	1
MEXICO	2	2	7	0	11
MOLDOVA	0	8	3	0	11
MOZAMBIQUE	0	0	1	0	1
NICARAGUA	0	1	2	0	3
NORWAY	0	1	2	0	3
PARAGUAY	1	0	0	0	1

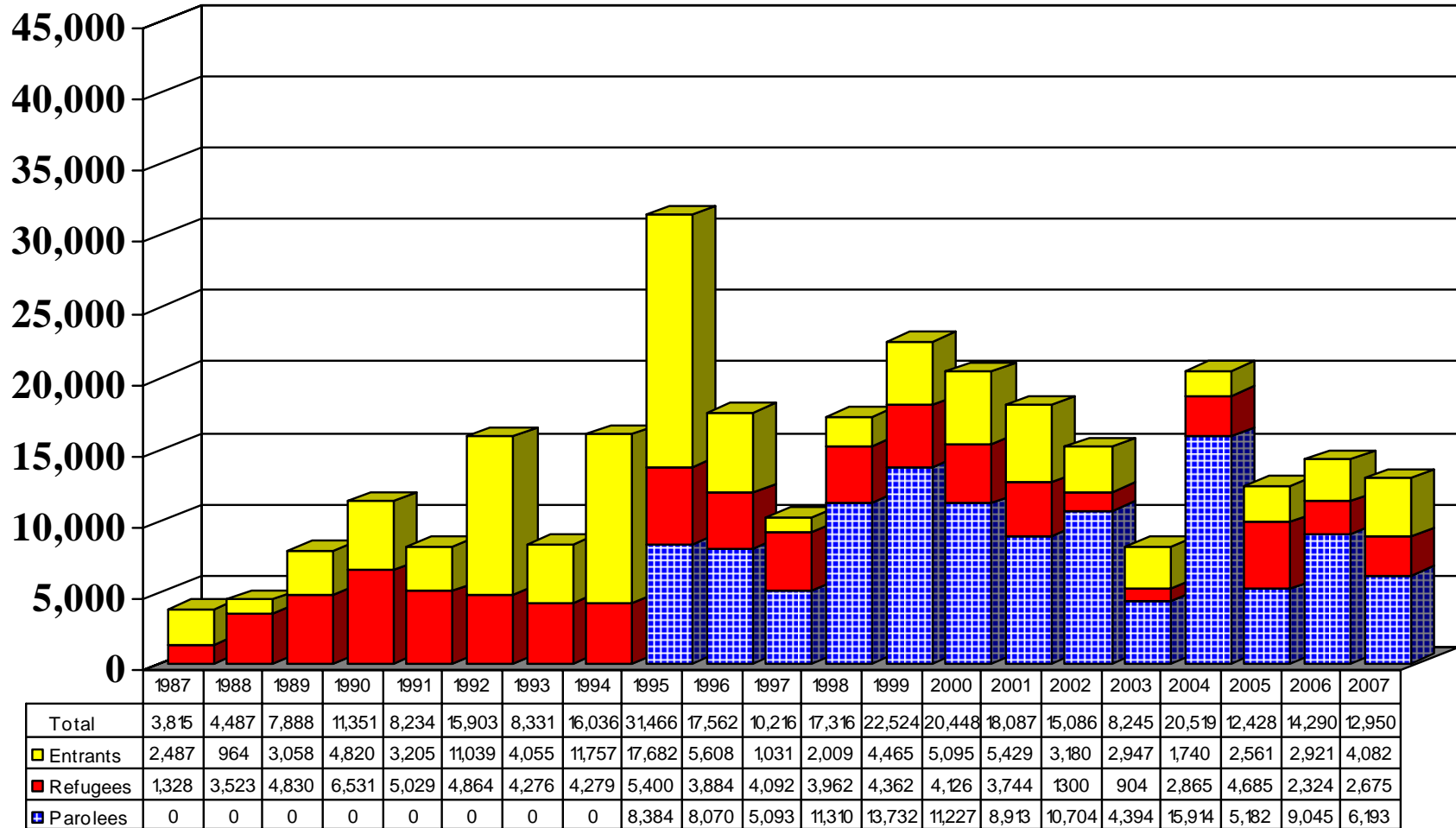
**State of Florida Arrivals and Clients Receiving Services
Federal Fiscal Year 2007
Origin by Age**

ORIGIN	0-5	>5-18	>19-60	>60	TOTAL
PERU	1	0	4	0	5
PHILIPPINES	0	0	1	1	2
RUSSIA	1	7	28	4	40
RWANDA	0	0	1	0	1
SERBIA	0	0	1	0	1
SIERRA LEONE	0	1	0	0	1
SOMALIA	2	7	24	0	33
SOUTH AFRICA	0	4	4	0	8
SOUTH KOREA	0	0	1	0	1
SPAIN	2	1	0	0	3
ST. VINCENT	0	0	1	0	1
SUDAN	1	7	12	0	20
SWEDEN	1	0	0	0	1
TAJIKISTAN	0	0	1	0	1
TOGO	0	4	3	0	7
UGANDA	0	0	1	0	1
UKRAINE	2	12	14	4	32
URAGUAY	1	0	1	0	2
USSR/EUN	0	1	4	0	5
UZBEKISTAN	0	2	0	0	2
VENEZUELA	8	60	187	6	261
VIETNAM	0	9	19	6	34
YUGOSLAVIA	0	0	1	0	1
ZAIRE	2	7	2	0	11
ZIMBABWE	0	0	1	0	1
OTHER	4	22	72	7	105
TOTAL	652	4,463	22,996	766	28,877

State of Florida Arrivals

Federal Fiscal Year, 1987-2007

October 1st , 2006 - September 30th , 2007



Sources: Office of Refugee Resettlement, Refugee Data Center (WRAPS), United States Catholic Conference (USCC), Church World Service (CWS), Department of Health, Refugee Health Office, and Immigration and Naturalization Services.

**State of Florida Arrivals
Federal Fiscal Year 2007
County by Origin and Status**

COUNTY	Refugees			Entrant		Parolees	Total
	Cubans	Haitians	Others	Cubans	Haitians	Cubans	
ALACHUA	2	0	0	0	0	0	2
BREVARD	11	0	14	3	0	5	33
BROWARD	77	0	44	123	16	231	491
CHARLOTTE	8	0	1	5	0	3	17
COLLIER	36	0	0	55	0	152	243
DESOTO	0	0	0	5	0	0	5
DUVAL	49	0	479	2	0	12	542
ESCAMBIA	0	0	1	0	0	0	1
FLAGLER	0	0	0	0	0	1	1
HAMILTON	0	0	0	3	0	0	3
HENDRY	13	0	0	2	0	2	17
HERNANDO	0	0	0	8	0	6	14
HILLSBOROUGH	177	0	118	144	1	170	610
INDIAN RIVER	0	0	0	0	0	7	7
LAKE	9	0	0	30	0	81	120
LEE	11	0	14	35	0	84	144
LEON	0	0	5	0	0	0	5
LEVY	0	0	0	1	0	0	1
MANATEE	0	0	0	0	0	7	7
MARION	2	0	0	5	0	3	10
MARTIN	0	0	0	0	0	3	3

**State of Florida Arrivals
Federal Fiscal Year 2007
County by Origin and Status**

COUNTY	Refugees			Entrant		Parolees	Total
	Cubans	Haitians	Others	Cubans	Haitians	Cubans	
MIAMI-DADE	1,242	0	48	3,243	11	5,017	9,561
MONROE	4	0	0	49	0	28	81
OKALOOSA	0	0	5	0	0	0	5
OKEECHOBEE	0	0	0	0	0	1	1
ORANGE	30	0	60	52	1	51	194
OSCEOLA	1	0	0	15	0	18	34
PALM BEACH	38	0	25	206	2	214	485
PASCO	16	0	2	7	0	11	36
PINELLAS	44	0	23	6	0	16	89
POLK	2	0	0	26	0	27	55
PUTNAM	0	0	0	0	0	2	2
SARASOTA	10	0	35	9	0	30	84
SEMINOLE	13	0	0	3	0	0	16
ST LUCIE	0	0	0	9	0	8	17
SUWANNEE	0	0	0	2	0	0	2
VOLUSIA	6	0	0	3	0	3	12
TOTAL	1,801	0	874	4,051	31	6,193	12,950

**State of Florida Clients Receiving Services
Federal Fiscal Year 2007
County by Origin and Status**

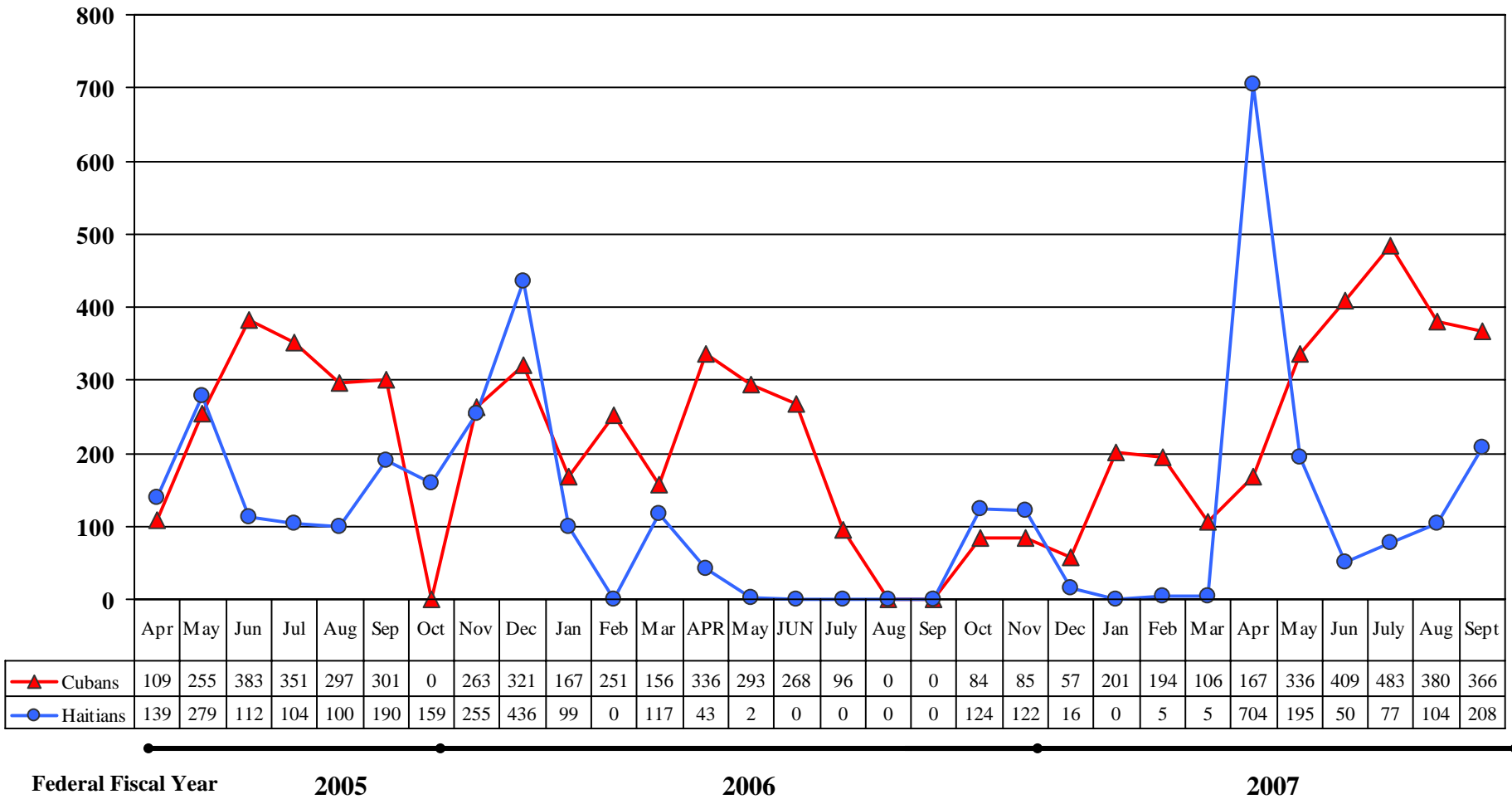
COUNTY	Refugees			Entrant		Parolees		Asylees			Total
	Cubans	Haitians	Others	Cubans	Haitians	Cubans	Haitians	Cubans	Haitians	Others	
ALACHUA	0	0	0	1	0	1	0	0	0	0	2
BREVARD	0	0	0	2	0	9	0	0	0	0	11
BROWARD	15	11	1	15	40	145	14	14	175	205	635
CLAY	0	0	0	0	0	2	1	0	0	1	4
COLLIER	18	7	2	183	13	237	21	3	42	8	534
COLUMBIA	0	0	0	0	0	0	0	0	0	3	3
DESOTO	0	0	0	1	0	1	0	0	0	0	2
DUVAL	12	6	18	4	5	80	3	1	18	13	160
FLAGLER	0	0	0	0	0	0	0	0	1	0	1
HAMILTON	0	0	0	0	0	1	0	0	0	0	1
HENDRY	0	0	0	1	0	2	0	0	0	0	3
HERNANDO	0	0	0	0	0	3	0	0	0	1	4
HIGHLANDS	0	0	1	1	0	8	0	0	0	0	10
HILLSBOROUGH	42	7	10	47	4	751	3	8	28	72	972
INDIAN RIVER	0	0	0	2	4	3	0	0	0	0	9
LAKE	0	0	1	1	1	5	0	0	1	6	15
LEE	8	0	1	32	5	197	3	3	0	1	250
MADISON	0	0	0	0	0	1	0	0	0	0	1
MANATEE	0	0	0	2	0	5	0	0	1	0	8
MARION	1	0	0	2	0	4	0	0	0	0	7
MARTIN	0	0	0	1	0	2	0	0	0	0	3

**State of Florida Clients Receiving Services
Federal Fiscal Year 2007
County by Origin and Status**

COUNTY	Refugees			Entrant		Parolees		Asylees			Total
	Cubans	Haitians	Others	Cubans	Haitians	Cubans	Haitians	Cubans	Haitians	Others	
MIAMI-DADE	285	22	9	1,585	169	8,661	102	67	275	287	11,462
MONROE	6	0	0	16	1	37	0	1	17	2	80
ORANGE	9	1	1	19	11	174	30	6	115	124	490
OSCEOLA	2	0	0	3	0	69	0	0	7	22	103
PALM BEACH	20	10	5	28	20	356	19	8	134	29	629
PASCO	13	0	1	6	1	35	0	0	1	9	66
PINELLAS	12	2	6	4	1	54	0	1	1	23	104
POLK	1	0	0	7	0	53	0	0	25	3	89
SARASOTA	0	0	0	14	1	51	0	0	2	2	70
SEMINOLE	1	0	0	3	0	64	0	1	0	68	137
ST JOHNS	0	0	0	0	1	0	0	0	0	0	1
ST LUCIE	0	0	0	1	0	24	1	1	11	1	39
SUWANNEE	0	0	0	2	0	1	0	0	0	0	3
VOLUSIA	1	0	0	3	0	4	0	0	0	11	19
TOTAL	446	66	56	1,986	277	11,040	197	114	854	891	15,927

Appendix

**State of Florida Arrivals
(Cuban and Haitian Coast Guard Interceptions)
April 1st, 2005 – September 30th, 2007**

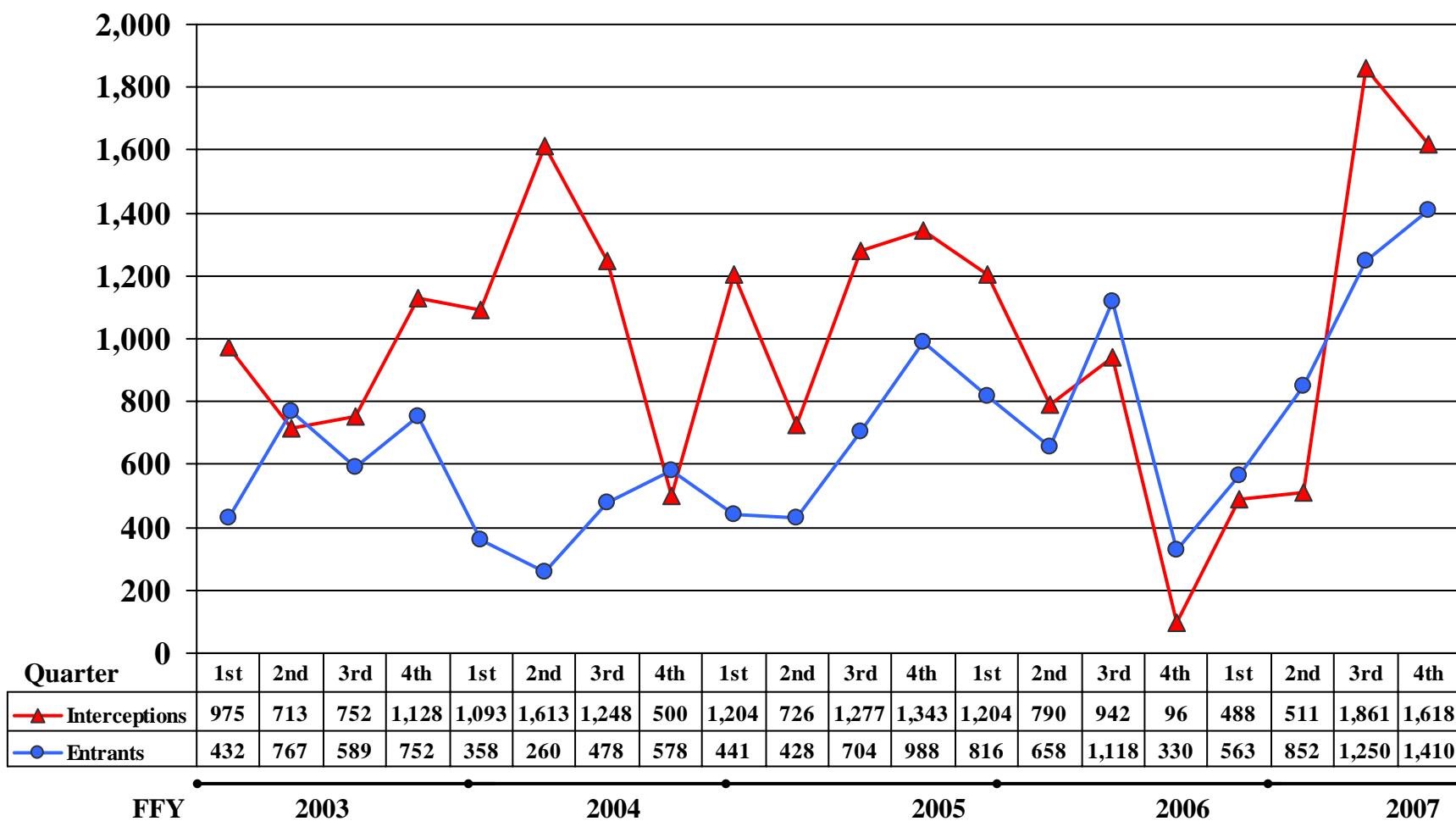


Source: U.S. Coast Guard

Florida Department of Children and Families, Office of Refugee Services

Total Cubans = 6,715	Total Haitians = 3,645
----------------------	------------------------

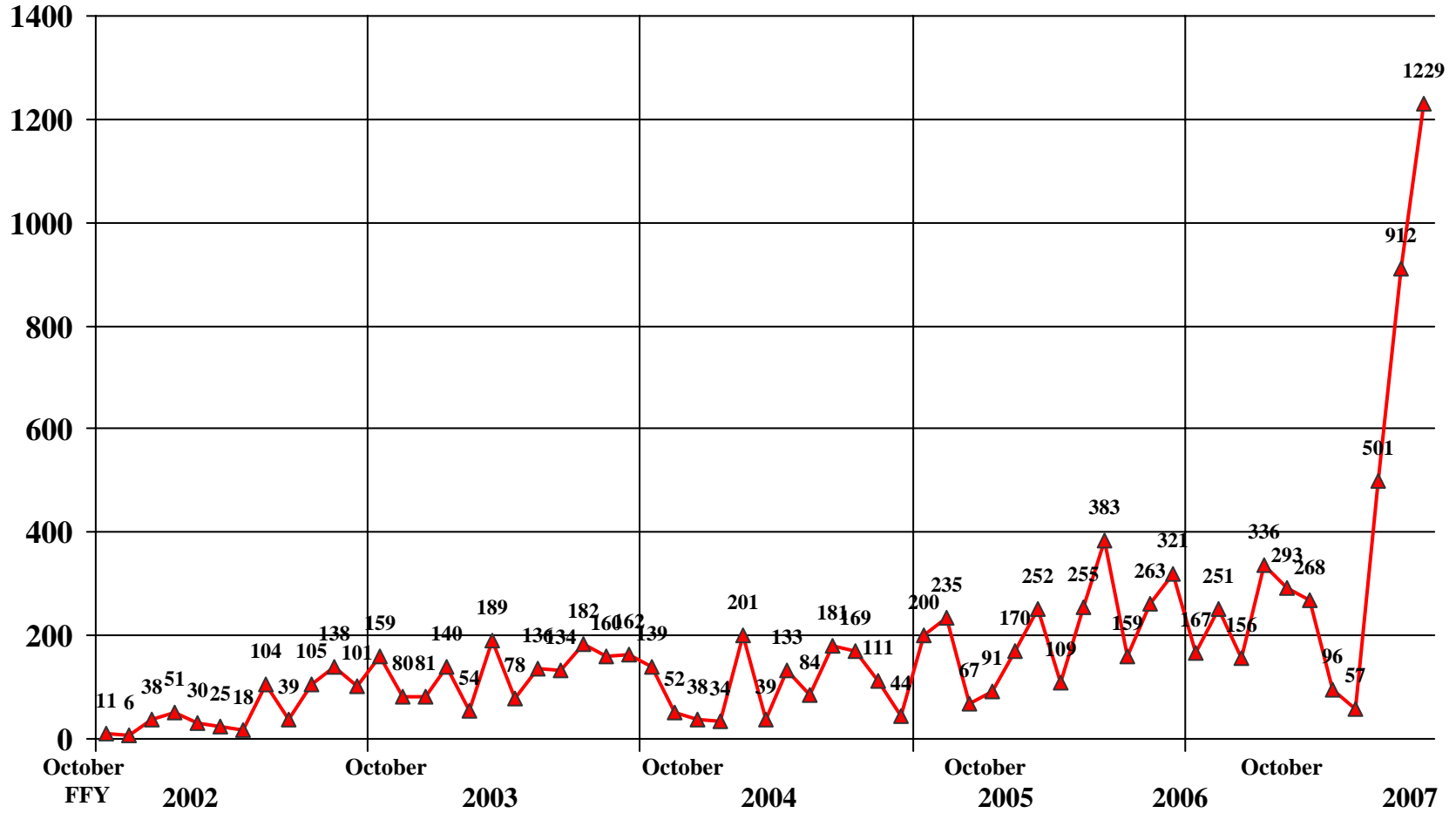
State of Florida Arrivals
(Coast Guard Interceptions vs. Entrant Arrivals)
 Federal Fiscal Year, 2003-2007 YTD



Source: U.S. Coast Guard, Church World Services, United States Catholic Conference

Florida Department of Children and Families, Refugee Services

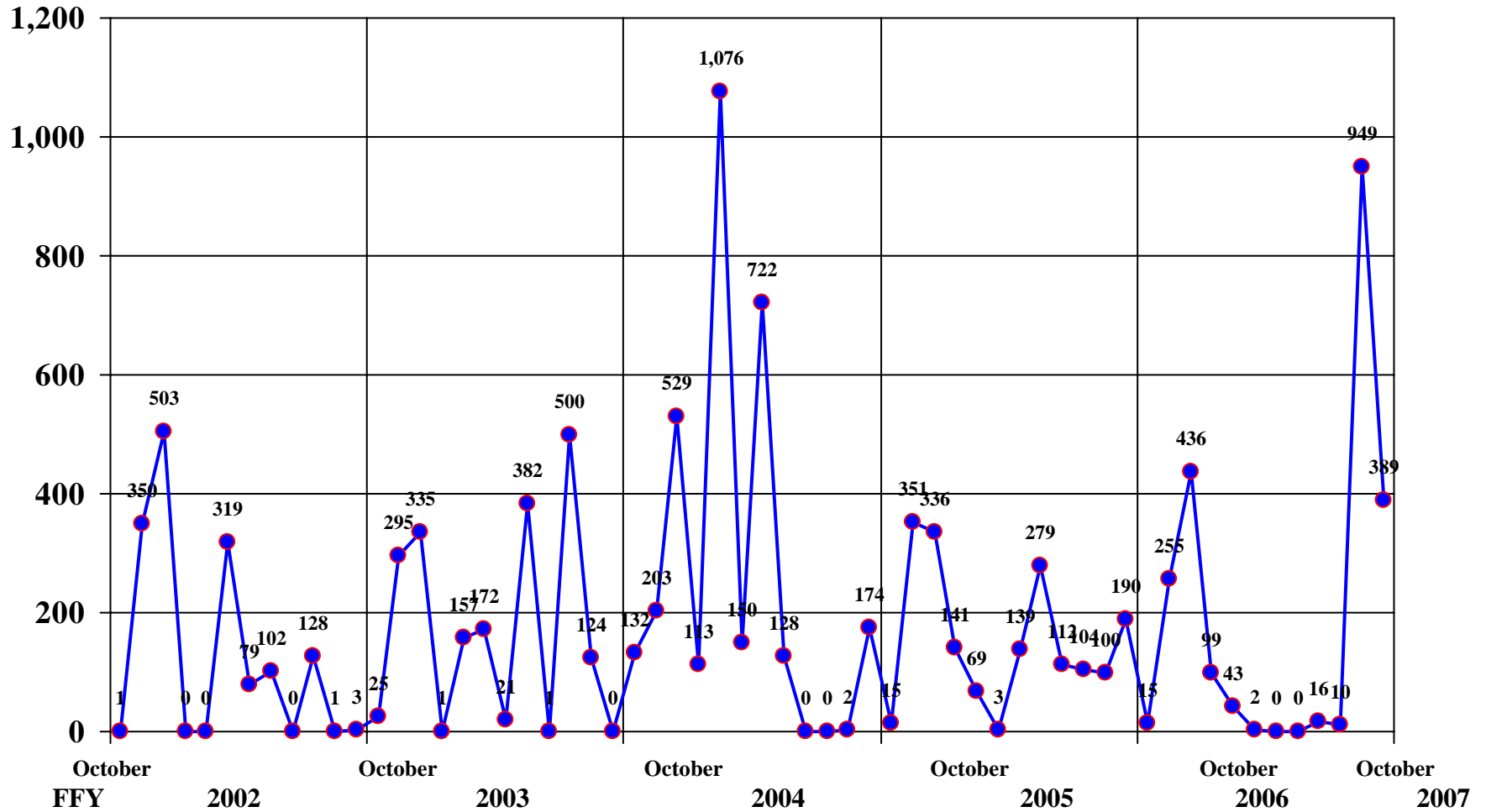
**State of Florida Arrivals
(Cuban Coast Guard Interceptions)
Federal Fiscal Year, 2002-2007**



Source: U.S. Coast Guard

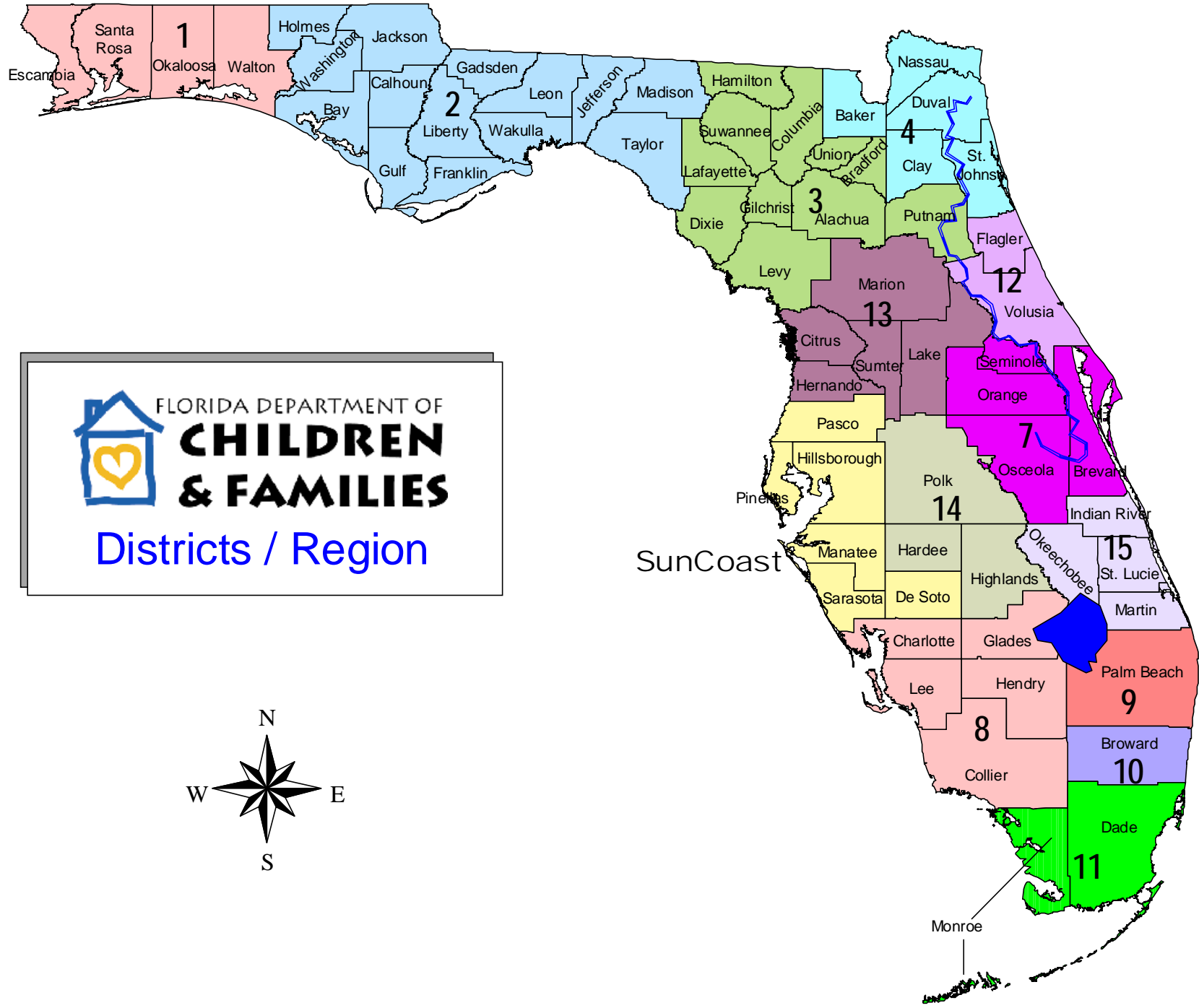
Florida Department of Children and Families, Refugee Services

State of Florida Arrivals (Haitian Coast Guard Interceptions) Federal Fiscal Years 2002-2007



Source: U.S. Coast Guard

Florida Department of Children and Families, Refugee Services



FLORIDA DEPARTMENT OF
**CHILDREN
 & FAMILIES**
 Districts / Region

