



PRESENTING  
**THE SOLUTION  
THAT SAVES**

Two Year Evaluation Report

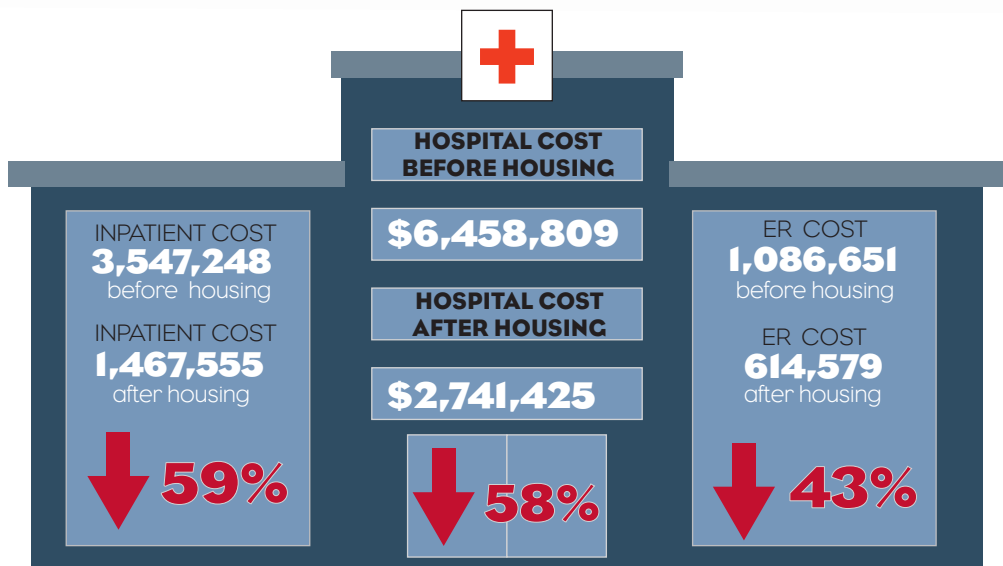
The Solution That Saves is part of an innovative state pilot to determine the cost benefits of providing Permanent Supportive Housing to high utilizers of crisis services. "High-utilizers" refers to persons experiencing homelessness who have chronic health conditions and frequently cycle through costly publicly funded systems of care. These systems include emergency rooms, shelters, criminal justice, and psychiatric facilities.

Ability Housing was the recipient of a special appropriation of funding through the Florida Housing Finance Corporation to fund one of three pilot sites to demonstrate the effectiveness of providing PSH to high utilizers of crisis services who are experiencing housing instability. The pilot sites are located in Duval, Miami-Dade and Pinellas Counties.

A supportive housing work-group was convened, comprised of representatives from The Agency for Health Care Administration, Department of Children and Families, Department of Elder Affairs, Department of Health, Department of Veterans Affairs, and Florida Housing. These work-group members evaluated the pilot proposals and agreed to assist Florida Housing and each pilot site with addressing respective issues regarding the implementation of the pilot and cost-benefit study and/or evaluation.

## The Solution That Saves

- One of three pilot sites
- Assesses impacts to publicly funded systems of care, comparing pre- and post-housing utilization and costs
- Assesses impacts on pilot participants' health and quality of life
- Jacksonville pilot had 92 participants - 43 units of housing were provided at Village on Wiley, 49 units of housing were provided at other apartment properties scattered throughout our community that are owned or leased by Ability Housing. 68 participants completed the pilot.
- Participants identified by multiple organizations - including healthcare, criminal justice, and emergency service providers - as homeless or unstably housed high utilizers of crisis services
- Selection criteria, methodology and evaluation team approved by state agencies
- Evaluation conducted by Health -Tech Consultants, Inc. and Institutional Review Board approved through Jacksonville University



Arrests and bookings costs two-years prior to housing totaled **\$74,256** (84 arrests). After housing, the cost fell to **\$25,636** (29 arrests), a reduction of **65%**.



Days spent in jail costs two- years prior to housing totaled **\$123,447** (2,053 days). After housing the cost of fell to **\$34,274** (570 days), a reduction of **72%**.

Total savings for  
arrests, bookings and jail time

**\$137,792**

Health  
Insurance  
Participation  
Increase

**56%**

Prior to housing, **36** participants were insured. After housing, **54** participants were insured.

Average  
Income  
Increase

**66%**

On average, participants experienced a **\$244 increase** in monthly income after moving into housing.

## Total Costs Pre-and Post-Housing

Total  
Costs  
Pre-Housing  
\$7,503,314

Total  
Costs  
Post-Housing  
\$5,253,803

**30%**

Savings to the  
Community

# PILOT PROGRAM

The Solution That Saves program provided Permanent Supportive Housing to members of the homeless community. The evaluation focused on 68 participants who remained enrolled in the study for a minimum of two years. The evaluation findings compared two time periods: the two years before (pre) moving into housing, and the first two years after (post) moving into housing.



Village on Wiley 43 units, funded by Florida Housing Finance Corporation

**Permanent Supportive Housing: The linkage of affordable housing with voluntary, person-centered support services is the national best practice for helping chronically homeless individuals with a disability to permanently exit homelessness.**

# PILOT FUNDERS



# PILOT EVALUATOR



# PILOT PARTNERS



# REPORTING AGENCIES

- Agency for Health Care Administration
- Baptist Health System
- Changing Homelessness
- City of Jacksonville Fire and Rescue Department
- Department of Children and Families
- Gateway Community Services
- Jacksonville Sheriff's Office
- Memorial Health
- Mental Health Resource Center
- St. Vincent's Health System
- Sulzbacher Center
- UF Health



building strong communities where everyone has a home

[abilityhousing.org](http://abilityhousing.org)